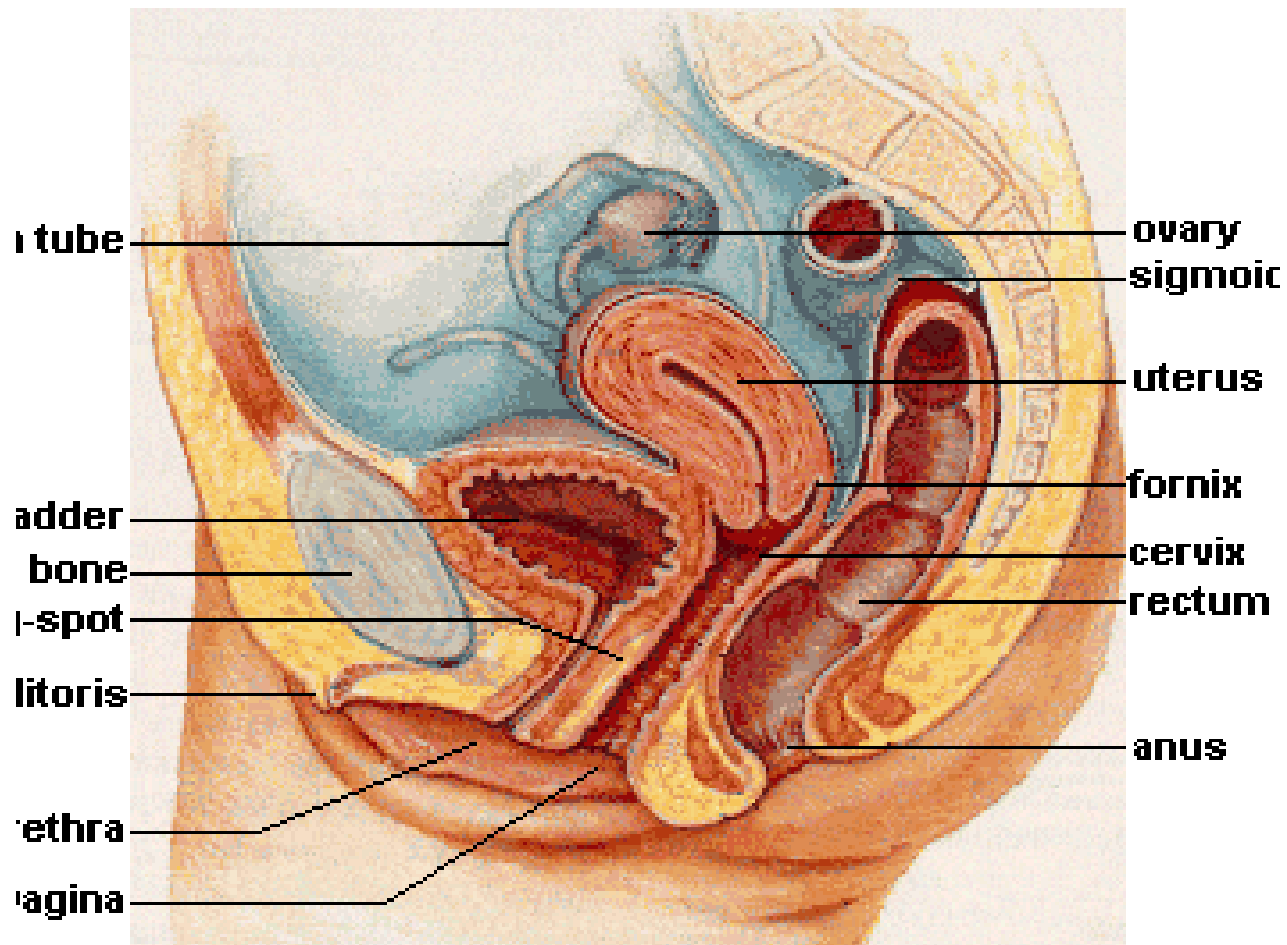


HIV 101

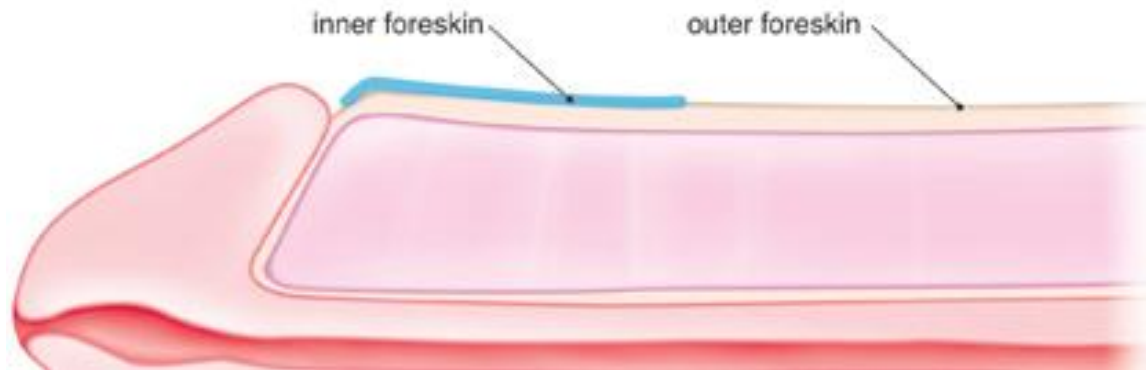
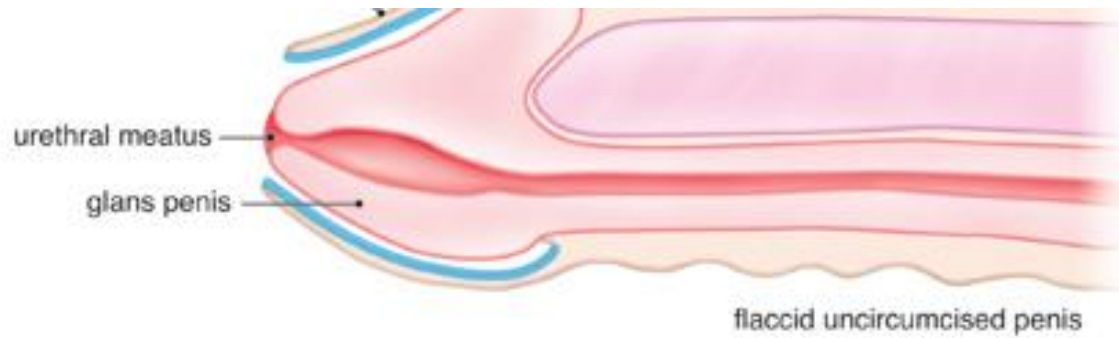
Visual Supplement



Female Reproductive Anatomy

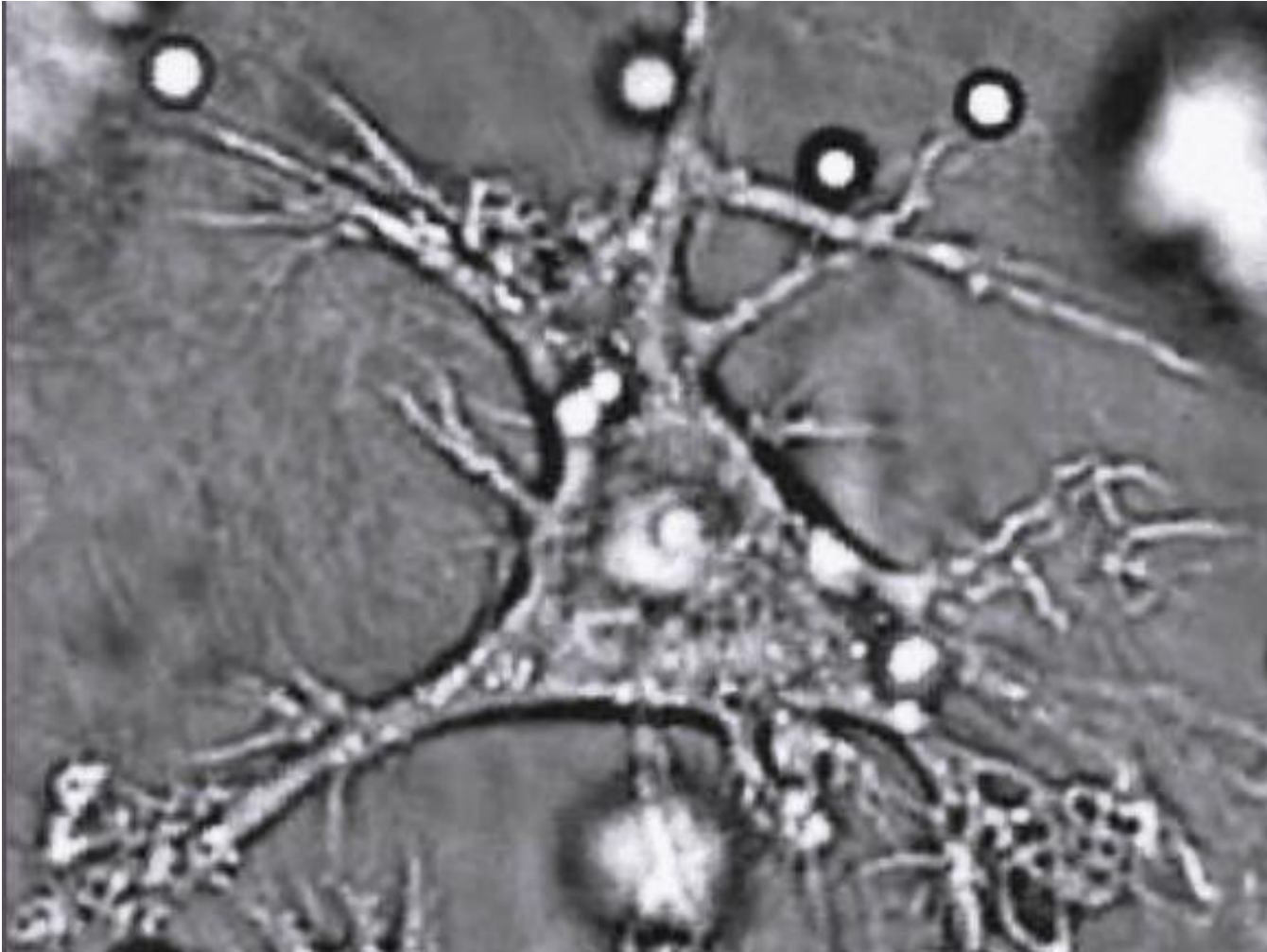
Note the areas which are particularly susceptible to HIV infection:

- Cervix
- Anus (in both men and women)



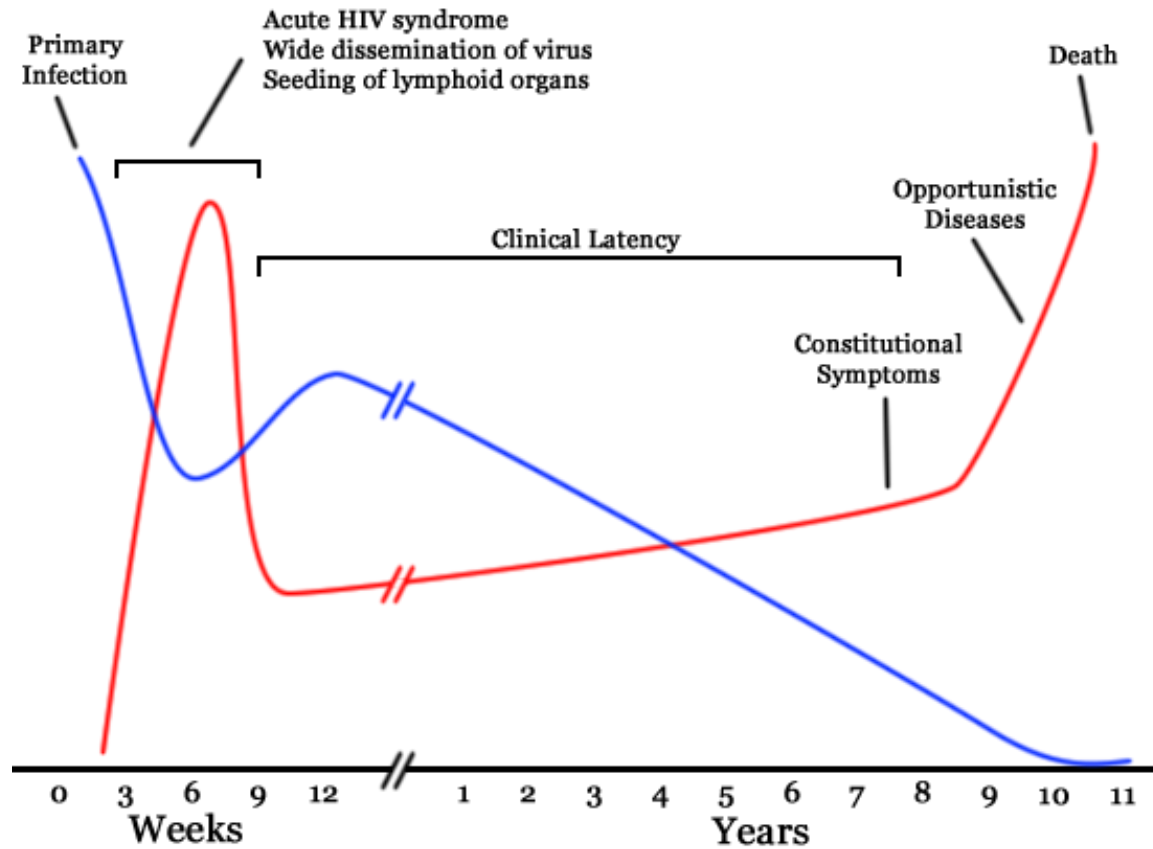
Male Uncircumcised Penis

Shows inner foreskin, which is rich with dendritic cells and therefore particularly susceptible to HIV infection.



Dendritic Cell with extended pseudopods





Stages of HIV Infection

- The BLUE line represents CD4 cell count.
- The RED line represents viral load.